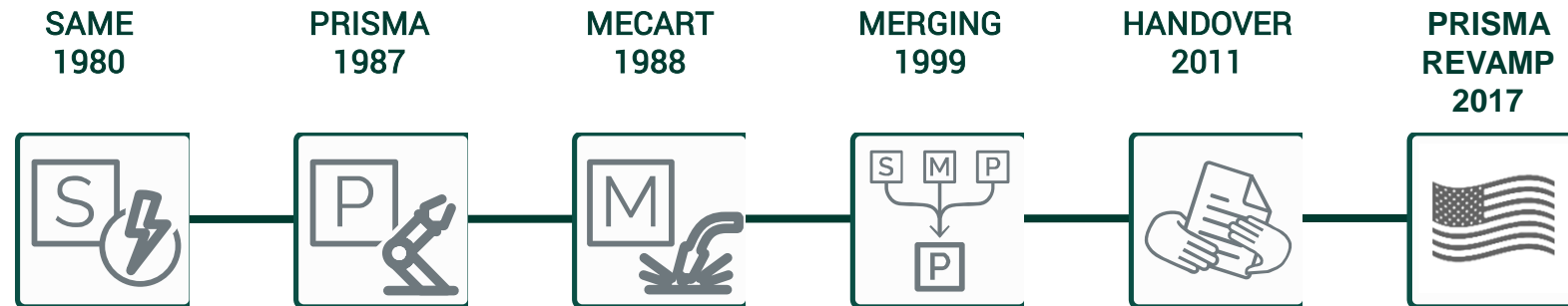




COMPANY PRESENTATION

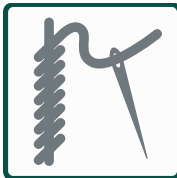
"I have always believed Automation would be the future"
Valerio Eugenio Alfonso



CORE VALUES



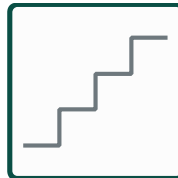
SAFETY



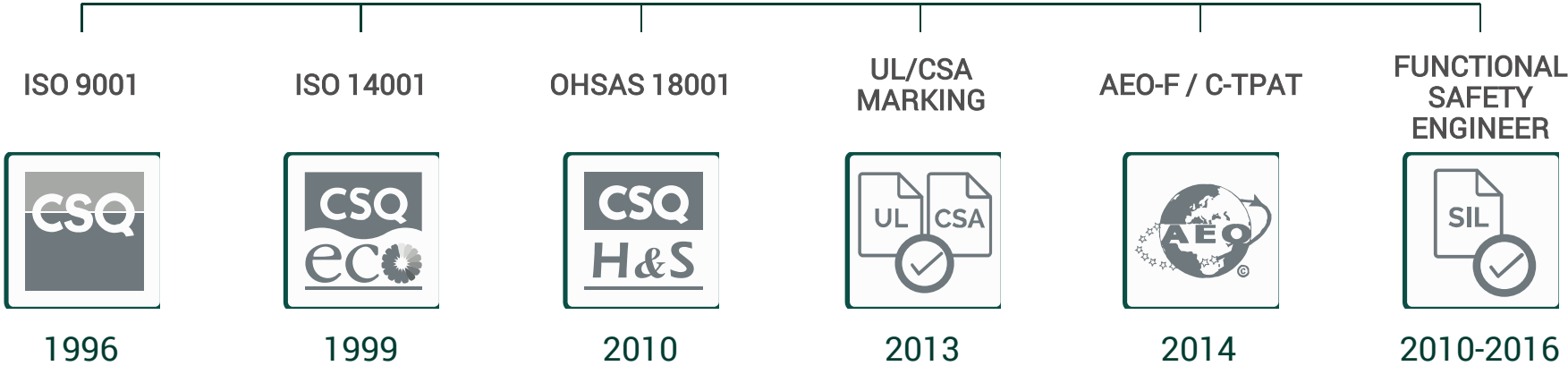
CUSTOMIZED
SERVICE



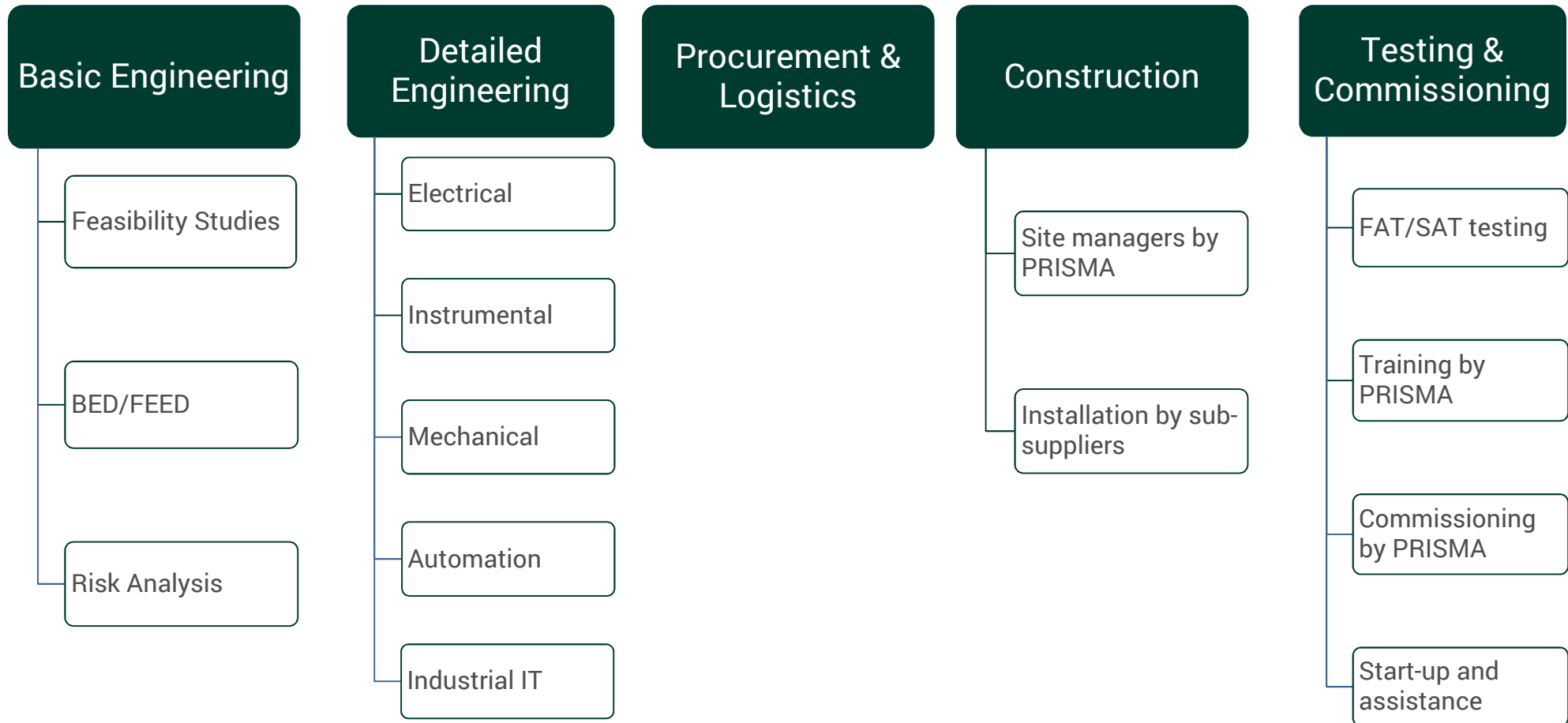
RESPECT



Continuos
Improvement



Turn-key plants GREENFIELD or BROWNFIELD



"We provide our clients with solutions from engineering and services through integration of mechanical, electrical and automation systems, up to entire turn key plants"

Valerio E. Alfonso – Founder

FUNCTIONAL SAFETY



- Risk analysis
- Design & implementation of Functional Safety systems
- Validation & integration

INDUSTRIAL FURNACES



- pxFLAM™ Burner Management System (BMS)
- Mathematical model to improve energy efficiency and quality of end product
- Turn-key service for electrical and automation package

PREFABRICATED POWER & CONTROL ROOMS (PCRS)



- Shelter for marine environments and resistant to vibrations
- Shelter for telecommunications and RTU for pipelines, also off-grid solutions
- Power & control room

MANUFACTURING OPERATIONS MANAGEMENT (MOM)



- Web-based MES/MOM solution to improve your production management
- Material and warehouse management, production scheduling and optimization, real-time tracking
- Smart Analytics: Quality control, data storage and analysis, KPI and reports

CYBER SECURITY



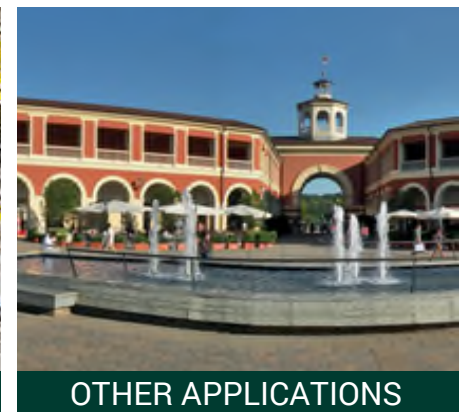
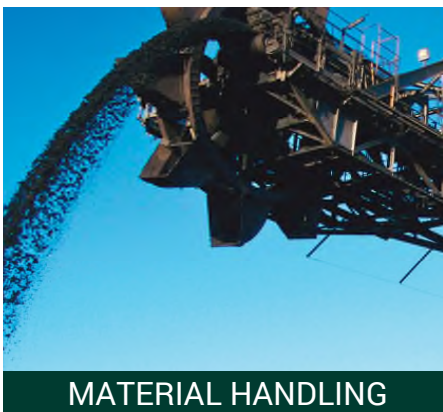
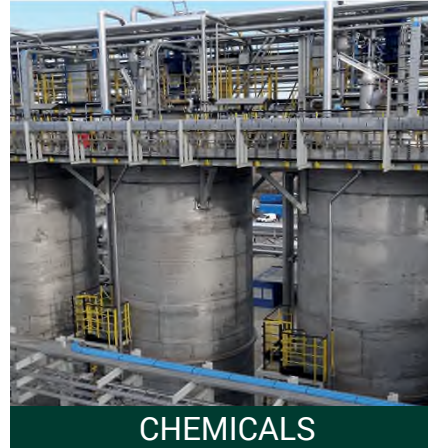
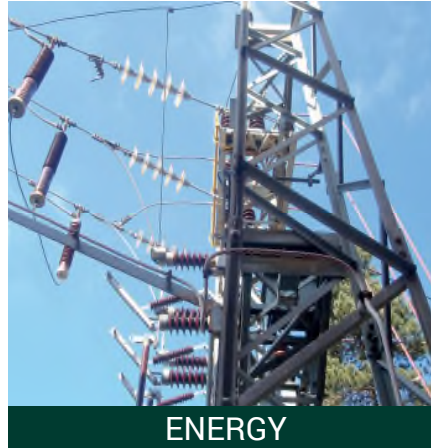
- Secure remote access to industrial networks
- Remote maintenance and virtual commissioning through a secure connection between servers and clients
- Safety consulting, industrial network test, penetration test – simulation of cyber attacks

INTELLECTUAL PROPERTIES



- pxSPEED™ process line speed control
- pxCOAT™ closed-loop coating thickness control
- pxTORQUE™ strip tension control
- pxDIAM™ coil diameter real-time control
- pxDEEP™ IP68 control submersible solution (RTU)

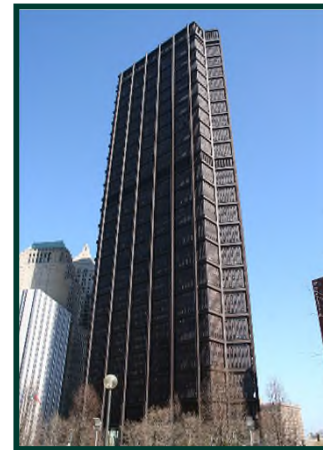
*PRISMA Impianti provides solutions
in many different industries*



HEADQUARTERS IN ITALY



US SUBSIDIARY



*Since 1980 PRISMA Impianti
provides advanced process control systems with smart analytics*



ILVA S.p.A. - Taranto - Italy



PRISMA team



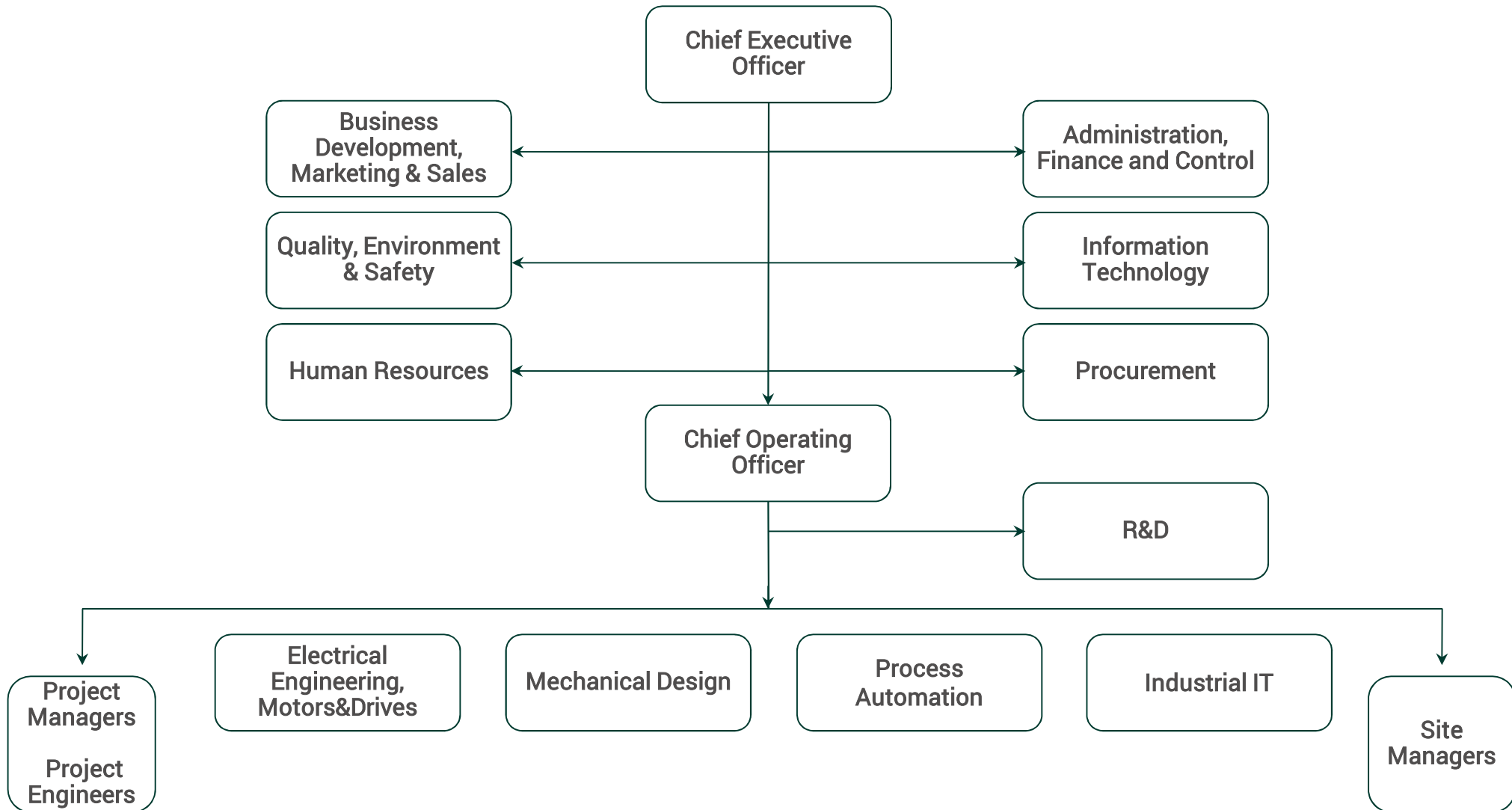
Sannazzaro De' Burgondi - Italy



- On site and remote maintenance of automation systems
- There are several reasons why you should consider involving us in your project: familiarity with a broad range of products and technologies, cost-effectiveness that comes from specialization, and experience in many areas of the world

Our team has successfully developed complex projects in more than 50 countries around the world





SIEMENS

- PLC
- Drive
- Engines
- Electromechanical
- Sensors

ABB

- DCS
- Drive
- Engines
- Electromechanical

Schneider Electric

- PLC e quadri operatore
- Panels and instrumentations MT/LT
- Sensor
- Electromechanical

Rockwell Automation

- PLC and panels
- AC and DC Drives
- Sensors

GE Power Controls

- PLC
- Drive
- Engines
- Electromechanical
- Sensors

invensys. Wonderware

- HMI Applications

HIMA

- Safety PLC

pilz

- Safety sensors
- Safety PLC

answer DRIVES

- AC and DC Drives

MITSUBISHI ELECTRIC Mitsubishi Electric Automation, Inc.

- PLC and panels
- AC and DC Drives
- Sensors

MAIN CUSTOMERS

Ansaldo STS
A Hitachi Group Company




ROQUETTE


ArcelorMittal

 **HYUNDAI
STEEL**

SMS  **group**

Arvedi


ILVA


SOLVAY

 **DRILLMEC**
DRILLING TECHNOLOGIES

Duferdofin  **NUCOR**



SSAB



 **MARCEGAGLIA**

 **Tirreno Power**

 **GAZPROM**

 **METINVEST®**

TMEiC

 **General
Electric**



 **TOSYALI TOYO**

TRUST IN AUTOMATION
PRISMA[®]
Impianti



Thank you!

www.prismagroup.it